

Supplemental File for

Genetic variation in recalcitrant repetitive regions of the *Drosophila melanogaster* genome

Harsh G. Shukla, Mahul Chakraborty, J.J. Emerson

Supplemental File 4: Phylogenetic trees for analysis of PacBio HiFi assemblies in the *Stellate* locus. Blue boxes highlight the putative anchors identified in the comparisons.

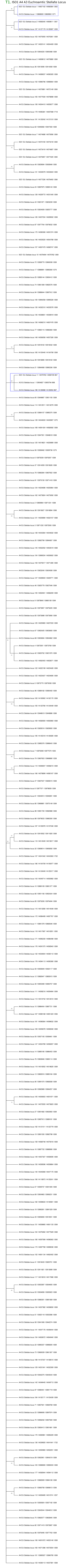
T1. ISO1 A4 A3 Euchromatic Stellate locus. A phylogenetic tree build using all individual Stellate units from iso1 HiFi, A4 HiFi and A3 HiFi euchromatic Stellate locus assemblies.

T2. ISO1 A3 Het. L2 Stellate locus. A phylogenetic tree build using all individual stellate units from iso1 HiFi and A3 HiFi heterochromatic L2 Stellate locus assemblies.

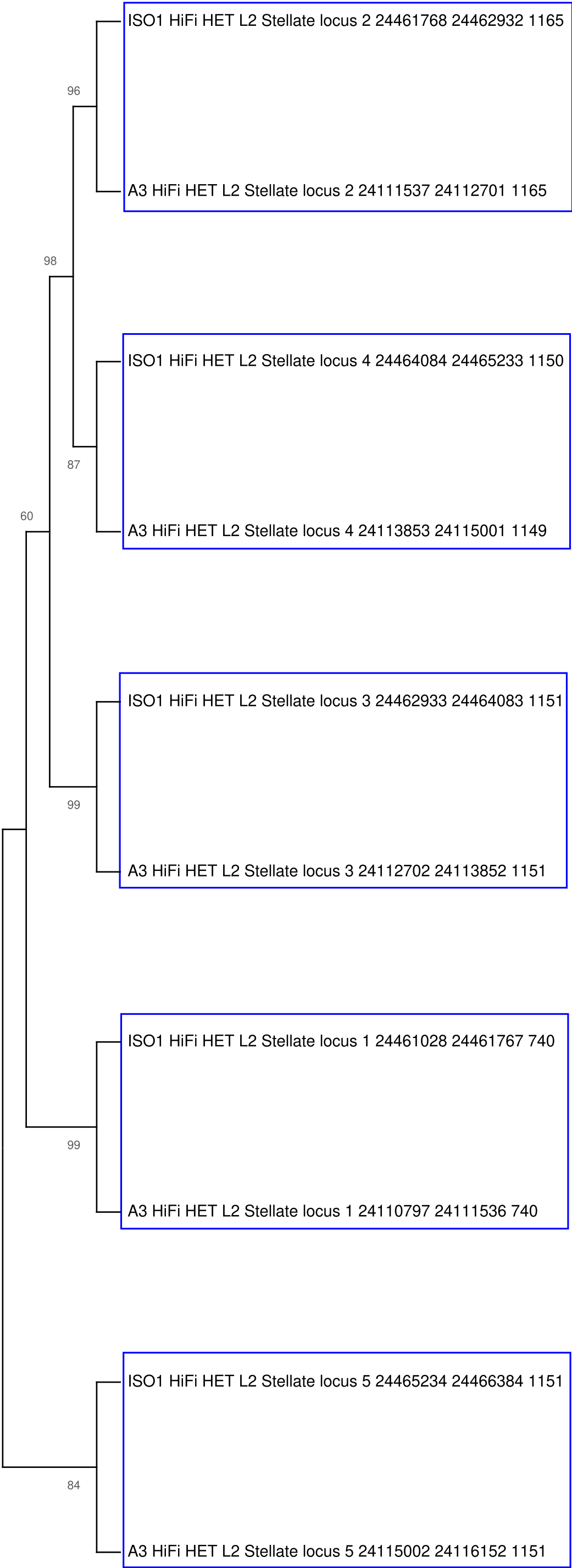
T3. ISO1 A3 Het. L3 Stellate locus. A phylogenetic tree build using all individual stellate units from iso1 HiFi and A3 HiFi heterochromatic L3 Stellate locus assemblies.

The naming convention of units is as follows:

STRAIN: Strain name that a unit belongs to
LOCUS_NAME: Name of the locus under investigation
UNIT NO: The identity for a unit. The first unit in the array is labeled 1 and so on.
START: The start coordinate of the unit in the array.
END: The end coordinate of the unit in the array.
LENGTH: The last column is the length of that unit.



T2. ISO1 A3 Het. L2 Stellate Locus



T3. ISO1 A3 Het. L3 Stellate Locus

